



GMT MONTHLY MEMBERSHIP PROGRESS REPORT

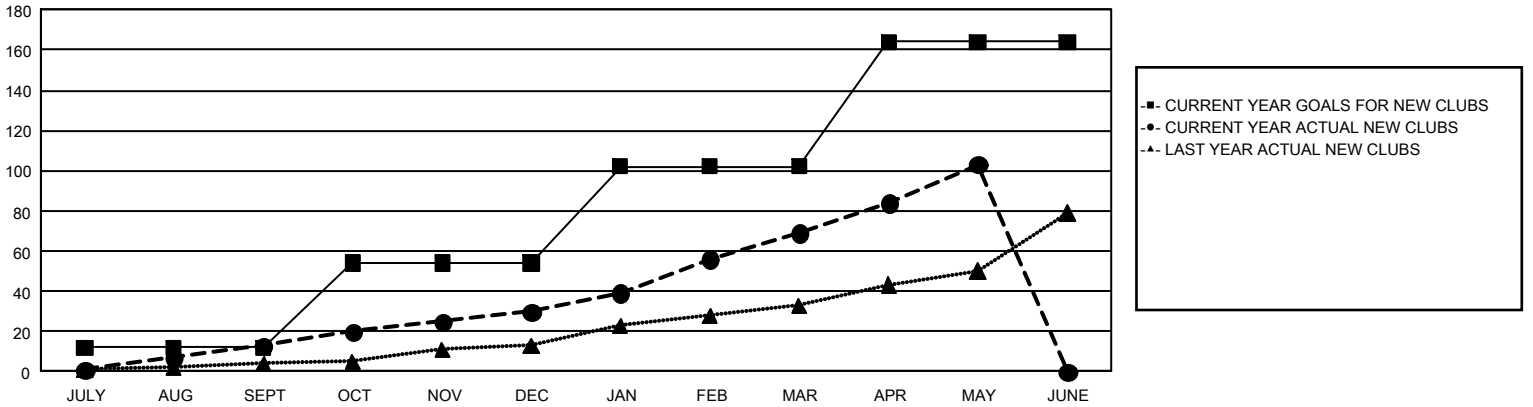
GAT Constitutional Area 4

Results as of: 5/31/2024

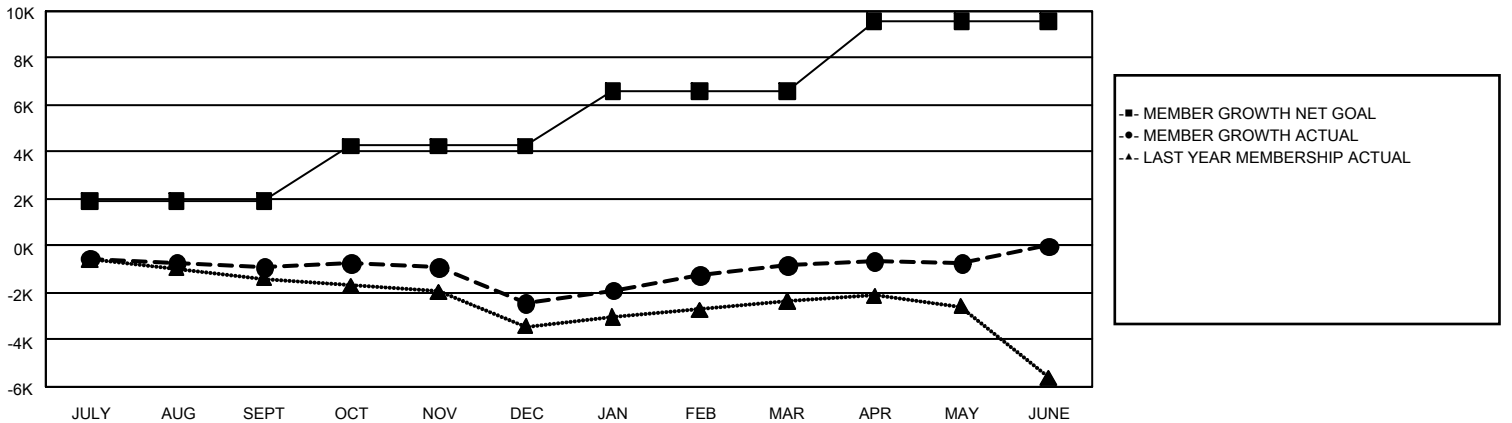
REPORT DOES NOT INCLUDE CLUBS IN UNDISTRICTED AREAS.

Clubs				Members			
RESULTS FOR 2023-2024				RESULTS FOR 2023-2024			
QUARTER	NEW CLUB GOAL	NEW CLUBS	DROPPED CLUBS	QUARTER	MEMBER GROWTH NET GOAL	MEMBER GROWTH ACTUAL	DROPPED MEMBERS ACTUAL (including transfers)
JULY/AUG/SEPT	12	13	56	JULY/AUG/SEPT	1,904	3,462	3,882
OCT/NOV/DEC	42	17	44	OCT/NOV/DEC	2,360	4,279	5,372
JAN/FEB/MAR	48	39	25	JAN/FEB/MAR	2,330	5,665	3,576
APR/MAY/JUNE	62	34	35	APR/MAY/JUNE	2,988	3,477	3,070

GOALS AND ACTUAL NEW CLUBS CUMULATIVE



GOALS AND ACTUAL MEMBERS CUMULATIVE



DROPPED CLUBS: 160	5,187 CLUBS OF 8,959 ADDED 1 OR MORE NEW MEMBERS	GENDER DISTRIBUTION MALE 164,838 (74.10%) FEMALE 57,579 (25.88%)
<u>DROPPED MEMBERS</u> DECEASED 2,141 CLUB CANCELLED 699 OTHER 13,028 <hr/> TOTAL 15,868	CLICK HERE FOR CUMULATIVE MEMBERSHIP DATA	TOTAL FAMILY UNIT MEMBERS 11,248 FAMILY MEMBERS PAYING HALF DUES 5,857